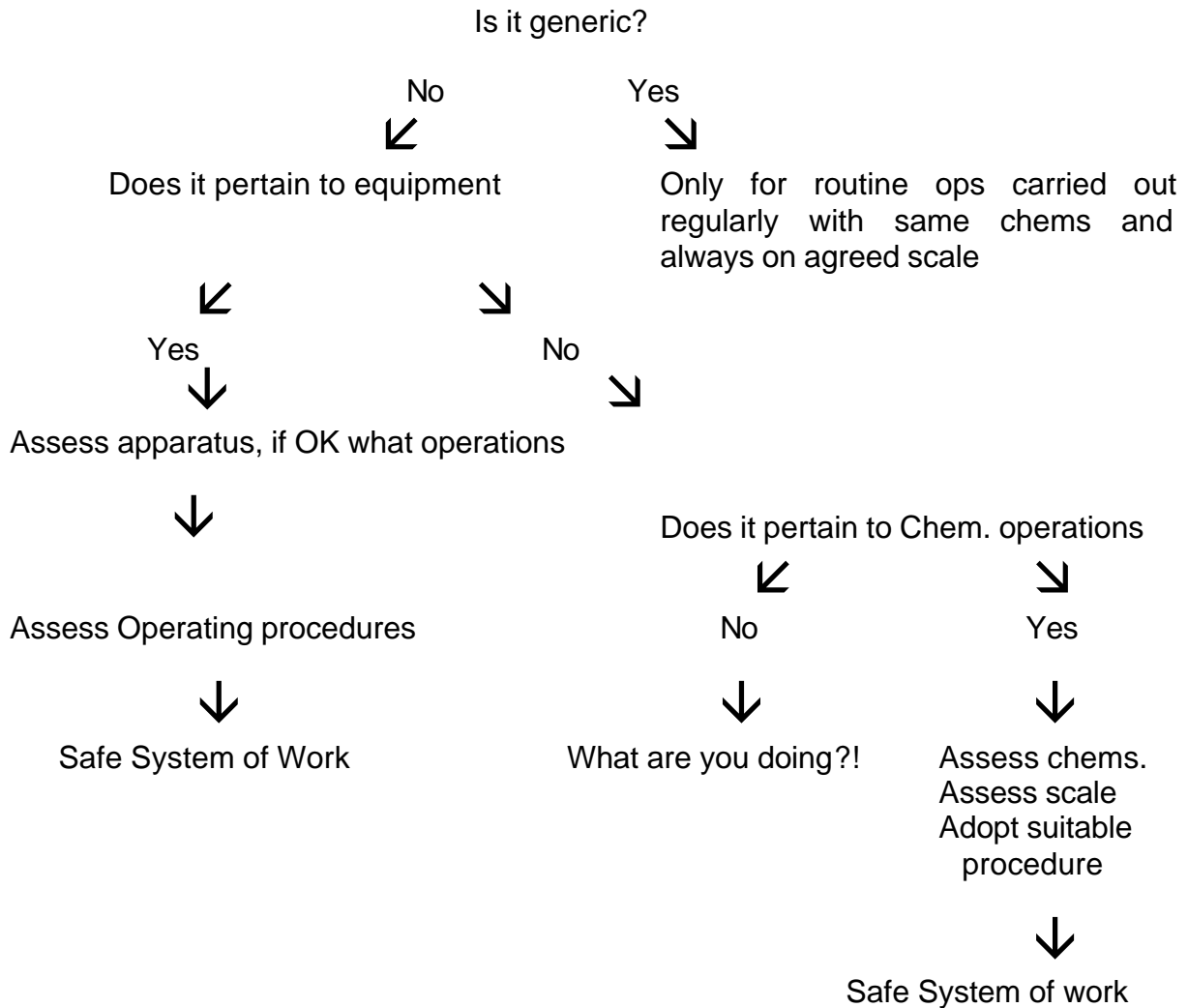


Risk Assessment



Set out above is a proposal for amending risk assessments to diminish the use of generic assessments and restrict them only to genuinely "generic" operations. The intention of this change is to force people to consider the implications of their actions, the suitability of the equipment and the interaction between components. It is believed that there are simply too many instances where people hide behind wide ranging generic assessments without proper consideration of the consequences of scale, interaction or alteration in the character of components. The continuation of this approach on a regular basis carries potentially serious consequences.